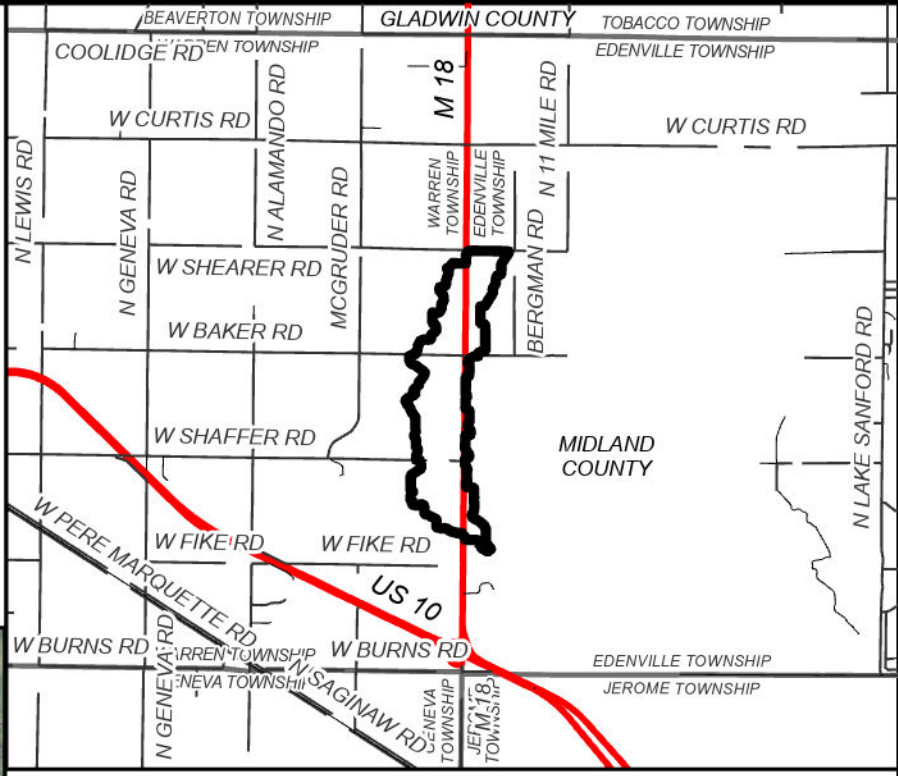
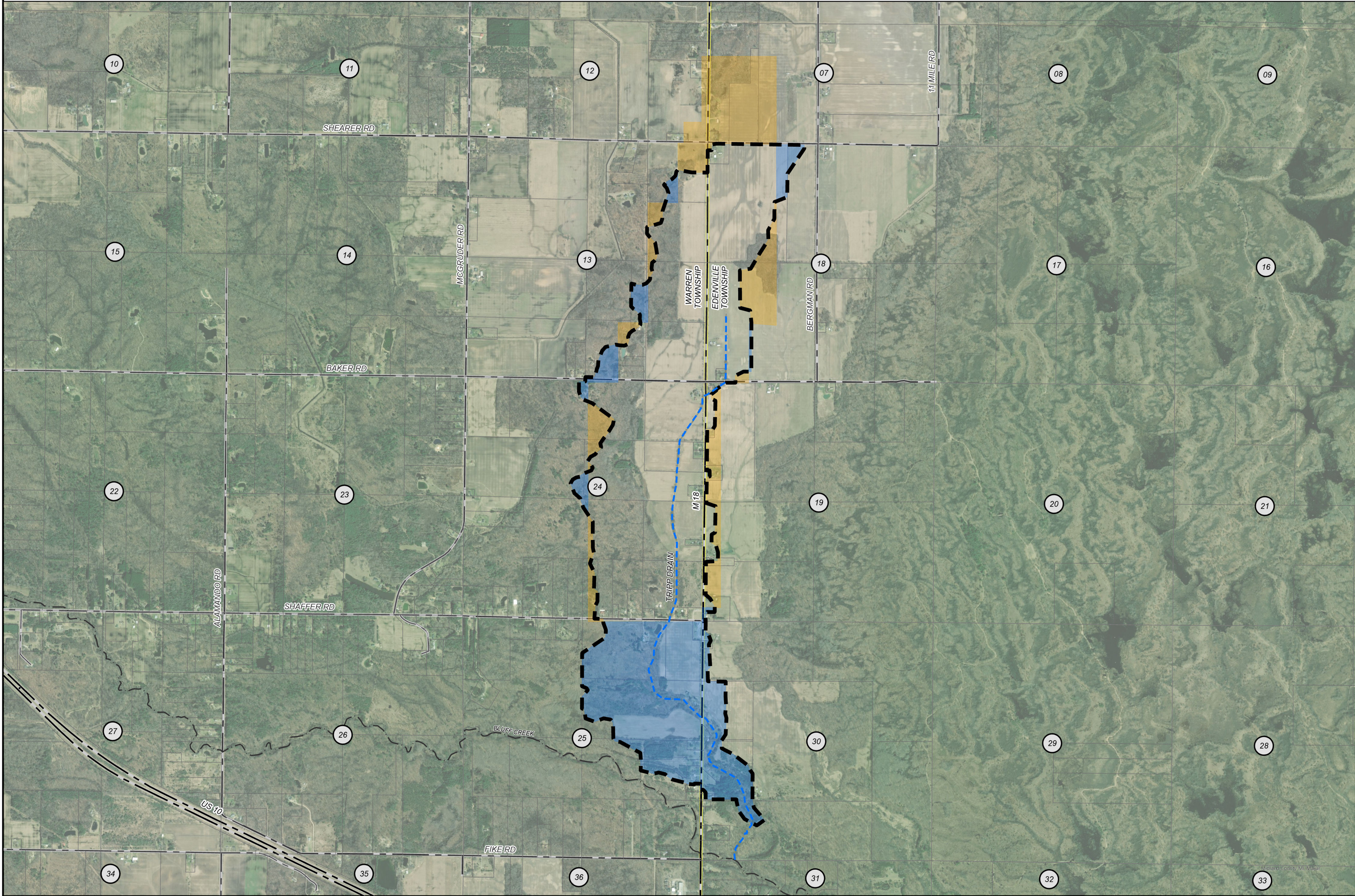


TRIPP DRAIN  
MIDLAND COUNTY, MICHIGAN  
MIDLAND COUNTY DRAIN COMMISSIONER - JOSEPH SOVA



**AREA MAP**  
NOT TO SCALE

N

0 500 1,000 2,000 FEET

**LEGEND**

- DRAINAGE DISTRICT BOUNDARY
- APPROXIMATE DRAIN LOCATION
- APPROXIMATE LOCATION OF OUTLET WATERCOURSE
- LANDS ADDED
- LANDS REMOVED
- MUNICIPALITY BOUNDARIES
- PARCELS
- STATE ROADS
- COUNTY ROADS
- LOCAL ROADS
- RAILROAD
- SECTION

**DRAINAGE DISTRICT BREAKDOWN**

MIDLAND COUNTY	
EDENVILLE TOWNSHIP	220.91 AC.
WARREN TOWNSHIP	624.04 AC.

**TOTAL ACREAGE IN DISTRICT** 844.94 AC.

**LENGTH OF DRAIN**  
TRIPP DRAIN 14,137.67 FT.

BY	MARK	REVISIONS	DATE
THE WORK REPRESENTED BY THIS DRAWING WAS DESIGNED BY THE ENGINEER FOR THIS SPECIFIC APPLICATION AND SPECIFIC LOCATION DESCRIBED HEREIN IN ACCORDANCE WITH THE CONDITIONS PREVALENT AT THE TIME THE DESIGN WAS DONE. THE ENGINEER DOES NOT GUARANTEE AND WILL NOT BE LIABLE FOR ANY OTHER LOCATION, CONDITION, DESIGN OR PURPOSE.			

TRIPP DRAIN  
MIDLAND COUNTY, MICHIGAN

DRAINAGE DISTRICT MAP

**Spicer group**

SAGINAW'S OFFICE  
230 S Washington Ave  
Saginaw, MI 48607  
Tel: 989-754-4747  
www.SpicerGroup.com

DE. BY: LLG DR. BY: LLG	CH. BY: LDO APP. BY: LDO	PROJECT NO. 137529SG2024
STDS.	SHEET 1 OF 1	DR 1
DATE: JANUARY 2025 SCALE: 1"=1,000'	FILE NO.	